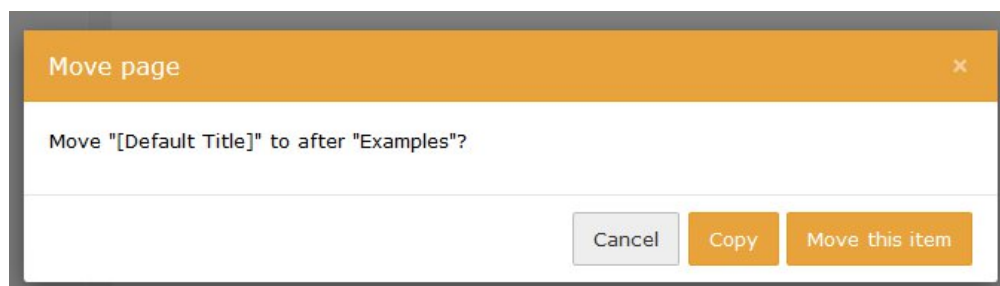


## 1.4 Move and copy page

Pages can be moved and copied, either by dragging and dropping, or by right-clicking on the page title and using the menu options.

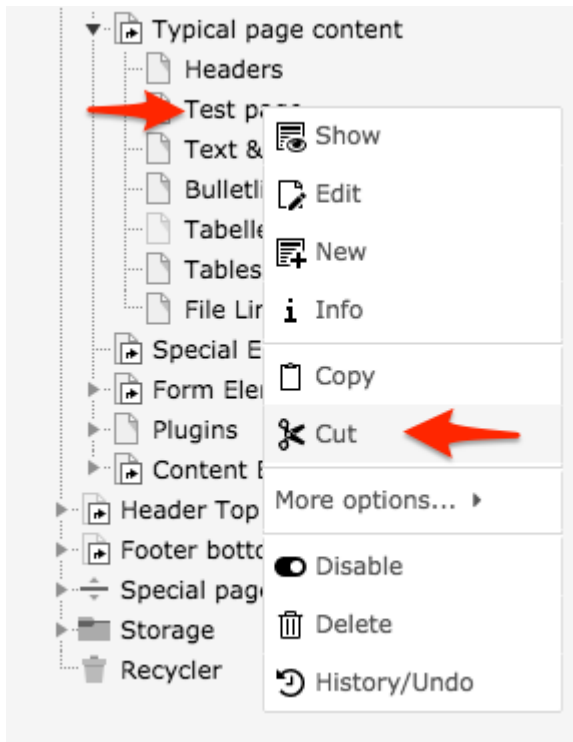
To move or copy the page by dragging and dropping, simply drag the page by the page title, not the page icon. It can then be placed in between two pages, or on top of an existing page to make it a subpage.

After releasing the page in desired position, a dialogue box will open with the options to '**Copy**' or '**Move this item**'. If the page was dragged by mistake, simply click '**Cancel**' (1.4.1).

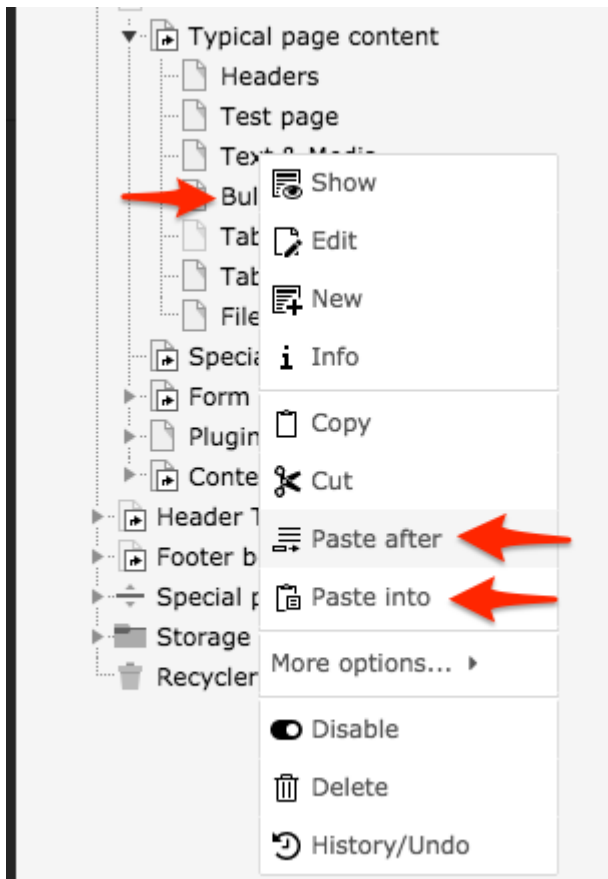


1.4.1

It is also possible to move pages by right clicking on the page title, in the page tree, and selecting Cut (1.4.1). After that right click on the page title where you wish to paste the page after or into (1.4.2).

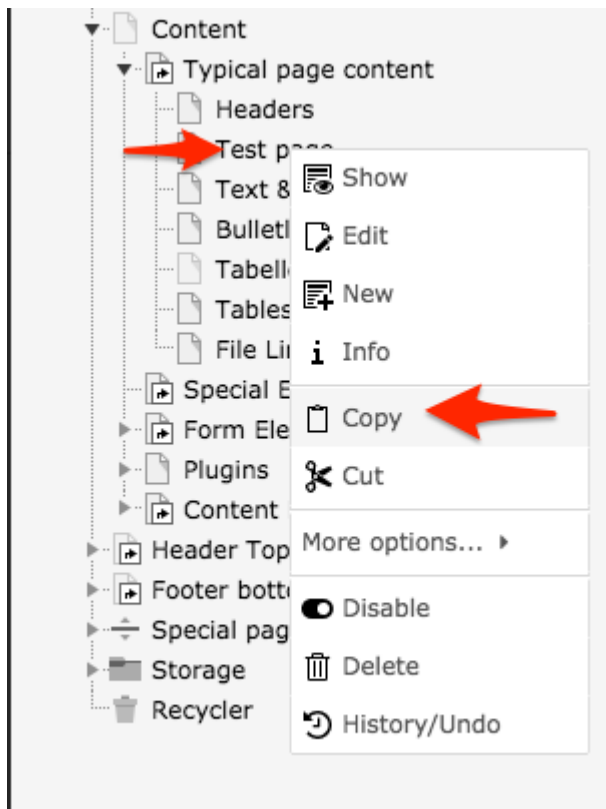


1.4.1

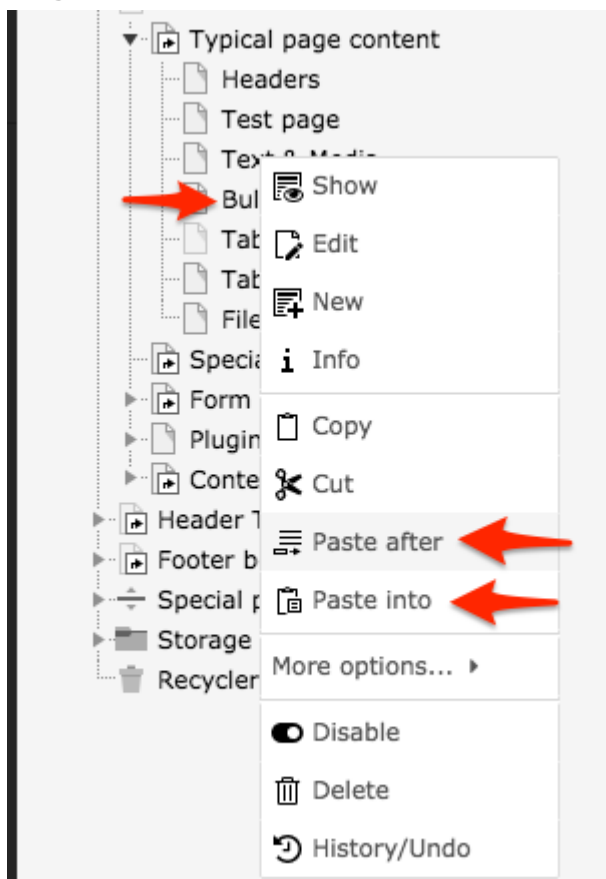


1.4.2

To use the same function for copying, right click on the page title and select Copy in the menu (1.4.3). Now right click on the page title where you wish to place a copy and paste after or into (1.4.4).



1.4.3



1.4.4

About TYPO3manual.com

TYPO3manual.com is an online manual for

editors working with TYPO3. It is powered  
by the web design agency Pixelant

[Read more about Pixelant](#)

## About TYPO3

---

For more information about TYPO3, go  
to [TYPO3.org](https://typo3.org)

[TYPO3 is a Trademark of the TYPO3  
Association.](#)

---

All rights reserved © 2024