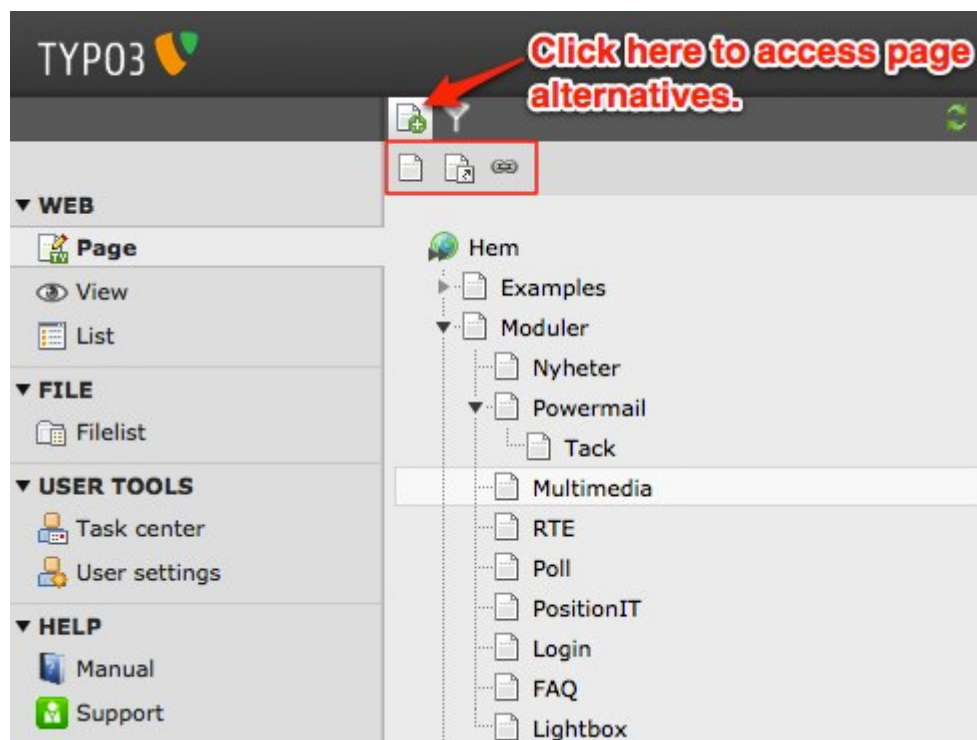


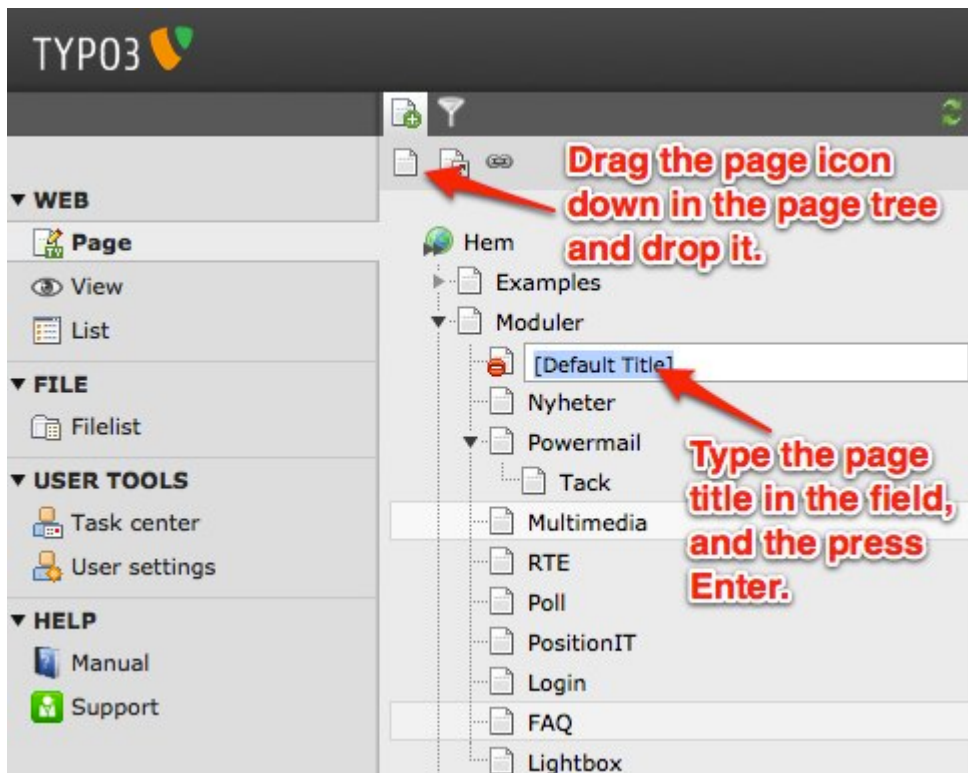
2.1 Create new page

Click on the icon above the tree structure, which will expand a small menu below. (img 2.1.1)



2.1.1

Drag the Page icon down in the tree structure and drop it in its place. It is possible to drop it between two pages or you can drop it on an existing page to make it a sub page. After you drop it a field opens up and here you can insert the page title. Press Enter to save. To edit the title, simply double click the title. (img 2.1.2)



2.1.2

About TYPO3manual.com

TYPO3manual.com is an online manual for editors working with TYPO3. It is powered by the web design agency Pixelant

[Read more about Pixelant](#)

About TYPO3

For more information about TYPO3, go to [TYPO3.org](https://typo3.org)

[TYPO3 is a Trademark of the TYPO3 Association.](#)

All rights reserved © 2024